

Pima 2323

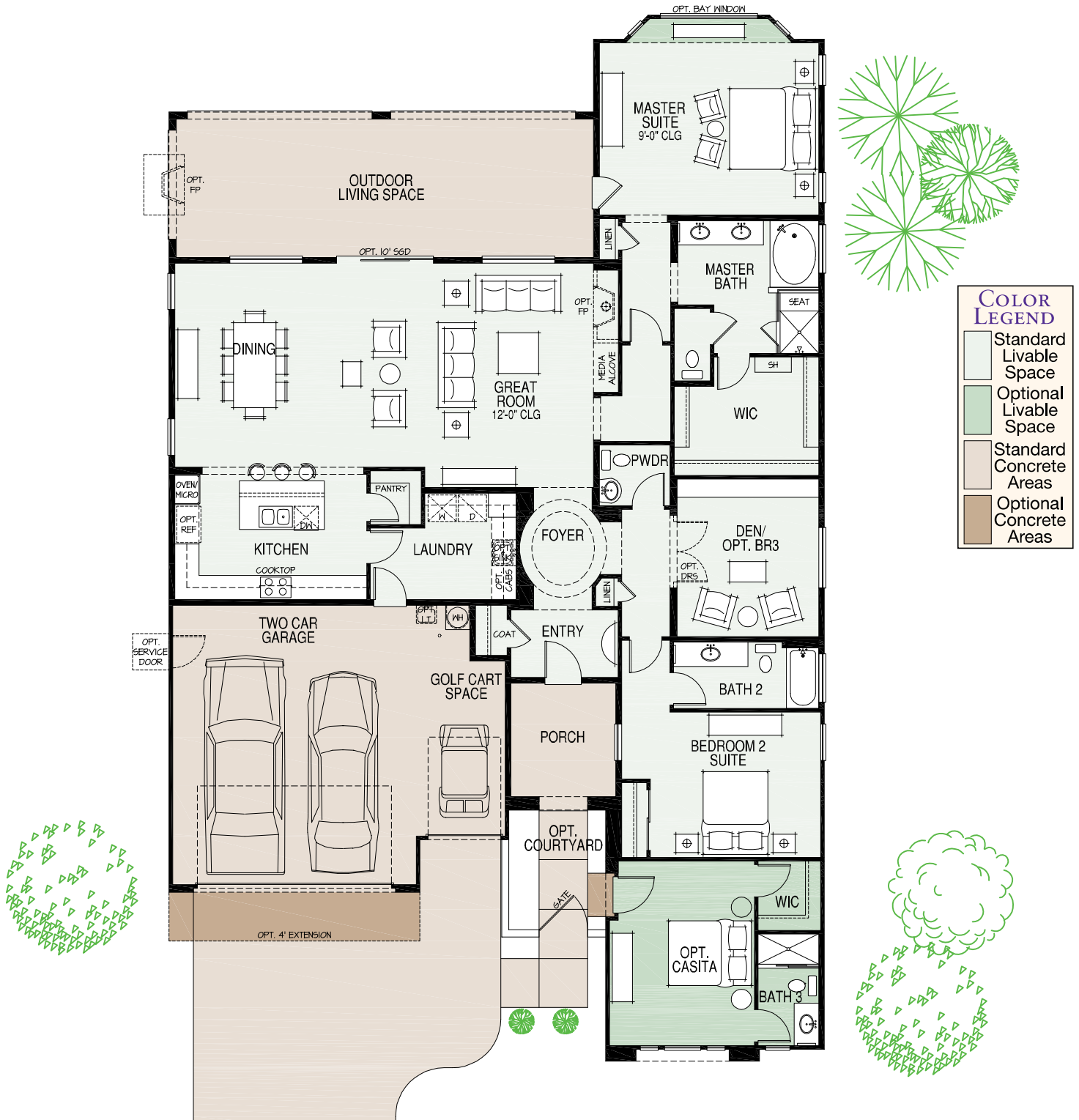
FLOOR PLAN



866-818-6068 or 520-818-6000

Premiere Series

- 2 Bedrooms • Den (Opt. 3rd Bedroom) • 2-1/2 Baths • Great Room • 2323 Sq. Ft.
- Optional Casita w/Full Bath, Courtyard Wall & Gate, 279 Sq. Ft.



Information is subject to change without notice. Floorplans and renderings are artist's illustrations and are not to scale or intended to show specific details. Furniture, cars, and golf carts etc. are not included. Illustrations may show optional upgrades (e.g. garage door style), landscaping, hardscapes/retaining walls and other improvements or features which are not included. We reserve the right to discontinue or change specifications. Effective date 9/10. Please see Traditions Features page for additional model home and builder information.

Pima 2323

EXTERIOR DESIGNS

Premiere Series

Exterior
Design
A



Exterior
Design
B

Exterior
Design
C



The housing at any Robson community is intended for occupancy by at least one person 55 years of age or older per unit, although the occupants of a limited number of the dwelling units may be younger. One person must be at least 40 years old in each unit. No one in permanent residence under 19 years of age. Homes are offered and sold by SaddleBrooke Development Company, broker for Robson Ranch Mountains LLC, owner/agent. Robson Ranch Arizona Construction Co ROC 192584 (KB-01). No offer for sale or lease may be made or accepted prior to buyer's receipt of Arizona Subdivision Public Report. Amenities under construction. Some amenities not included in community service fees. Information subject to change without notice. ©2010 Robson Communities®, Inc. 7/10

