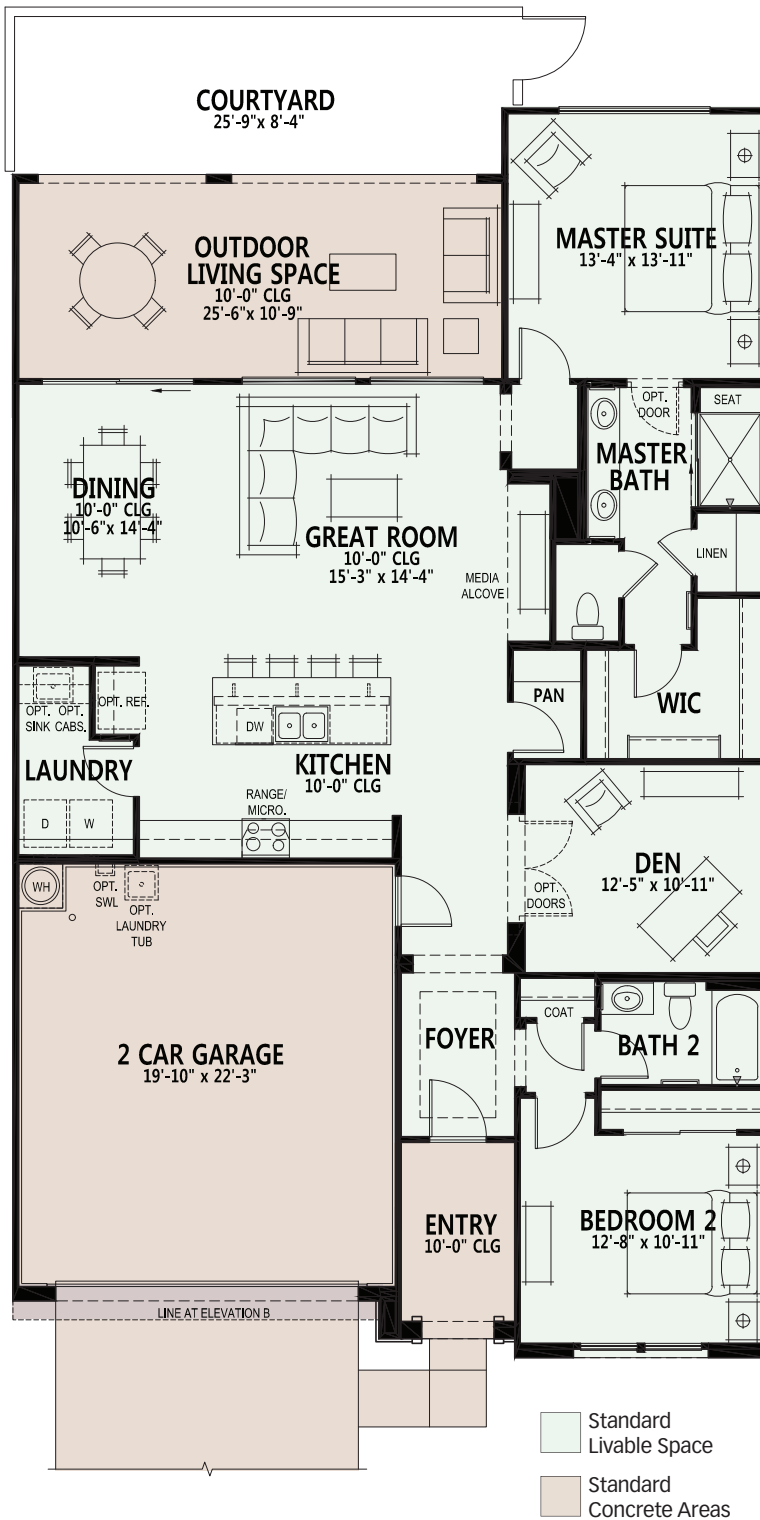


Viva 1,655 sq. ft.

Courtyard Villa Series SaddleBrooke Ranch

- 2 Bedrooms, 2 Baths
- Great Room
- Dining Area
- Spacious Den
- Grand Kitchen Island
- Walk-in Pantry
- Optional Powder Room
- Media Alcove in Great Room
- Generous Walk-in Closet in Master Suite
- Master Bath 42" x 60" Shower and Built-in Seat
- Separate Laundry Room
- 274 sq. ft. of Covered Outdoor Living Space
- Deep 2-Car Garage
- 9' & 10' Ceiling Heights
- Enclosed Private Courtyard with Gate – approx. 214 sq. ft.

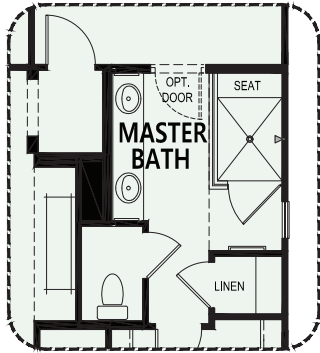


Exterior Design A

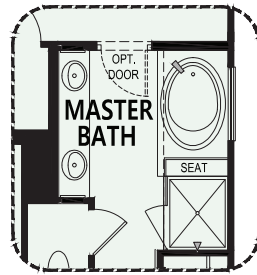


Exterior Design B

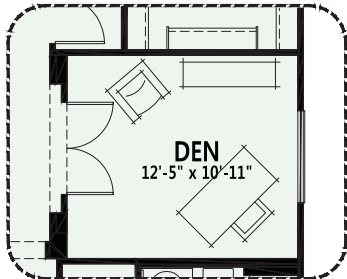
At SaddleBrooke Ranch, you can personalize your home with a variety of options and features.



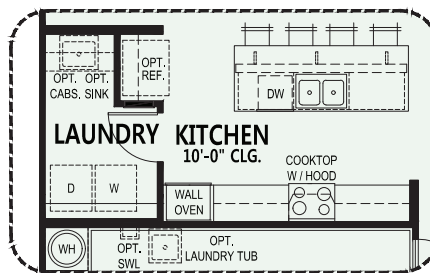
Opt. Curbless Shower



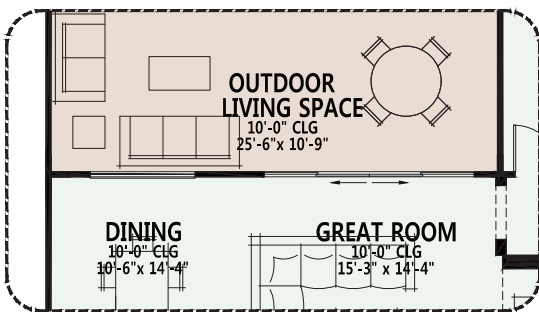
Opt. Tub at Master Bath



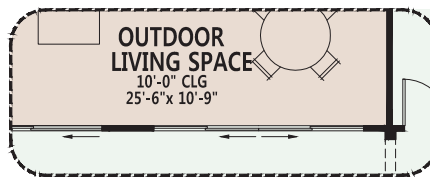
Opt. Doors at Den



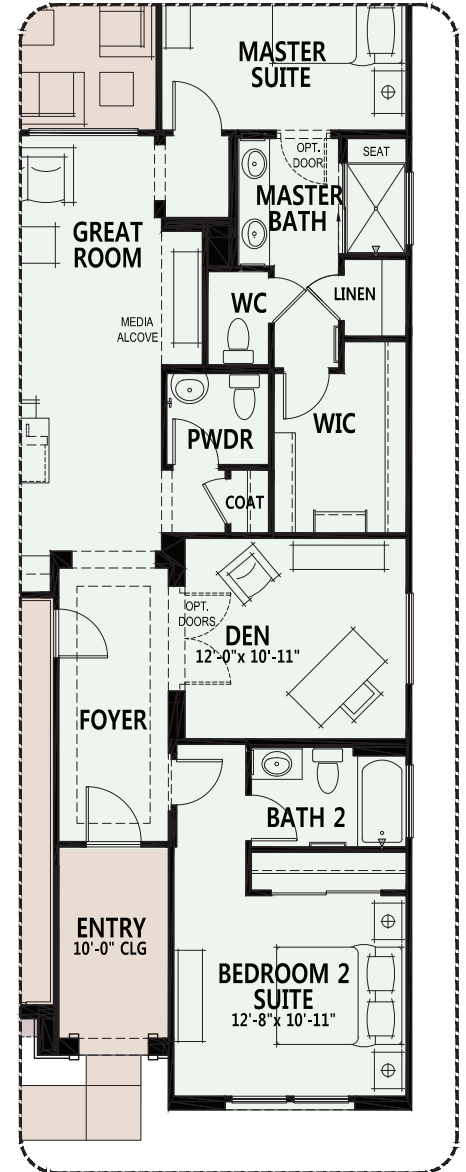
Alternate Kitchen



Opt. 12080 SGD with Window



Opt. 12080 SGD



Opt. Powder Room

Due to the variety of options allowing you to personalize your home, there may be some options which cannot be combined due to structural limitations. Please check with your New Home or Design Consultant.